

THE HAMBLE SCHOOL

NEWSLETTER – ISSUE 2: 21ST SEPTEMBER 2020

It was wonderful to see all year groups back on-site last week and we have been so impressed with how they have focused in lessons and adapted to our new routines.

Year 7 have settled into life at The Hamble School amazingly well and our Year 9 students seem to be really enjoying their option courses. We are so proud of how Year 11 have started their final year with us – with lots of hard work and the support of their tutors, Mrs Roome and Miss Cambridge, we know they can achieve fantastic GCSE results.

The Autumn term will continue to be challenging for schools and local communities, but we know that by working together as 'Team Hamble' we will be able to navigate through any national or local changes. We are constantly reviewing and adapting our COVID-19 plan to ensure we provide the safest school for our all students and staff.

YEAR 11 ENGLISH LANGUAGE

Year 11 are busy preparing for their Spoken Language Endorsement, which is taking place over the next couple of weeks. This is a compulsory part of the course for English Language. Students need to prepare a talk on a topic of their choice. Students will be given and date and time to meet with their English teacher to complete the endorsement. Some of the ideas that they have come up with are really engaging and the English Department are looking forward to hearing what they have prepared.

CONTACTING THE SCHOOL

Thank you for your support with our new system for contacting the school.

We are no longer able to welcome parents/carers on-site without an appointment.

In order to make an appointment with a member of staff you can email general@thehambleschool.co.uk or telephone (023 8045 2105) between the hours of 8am-4pm Monday to Thursday and 8am-3:30pm on a Friday.

If you wish to contact the Headteacher, please email our new dedicated email address headteacher@thehambleschool.co.uk

EQUIPMENT PACKS FOR STUDENTS

A reminder that students must not share equipment in lessons and it will be difficult for teachers to lend this to students due to Health and Safety/cleaning measures. The only except to this is specialist equipment e.g. Art materials, which will be cleaned between use. We would therefore strongly advise that students bring their own equipment to support their learning.

The following items are recommended:

- Pencil case
- X2 Pens
- Pencil

- Coloured pencils
- Eraser
- Glue Stick
- Green pen
- Purple pen
- Highlighter
- Pair of Compasses
- Pencil Case
- Protractor
- Ruler
- Sharpener

We have a few equipment packs left for **£5** which contain the items above. If you would like your child to purchase one from school they are available from Scopay

www.scopay.com/hamble under 'Miscellaneous'. Once ordered the packs will be delivered to your child in school.



ILLNESS & COVID-19

If your child or anyone in your household has the following symptoms of COVID-19, the Government guidelines should be followed and your child should not return to school until a test has been taken:

- A high temperature (37.8°C or over)
- A new, continuous cough – this means coughing a lot, for more than an hour or 3 or more coughing episodes in 24 hours
- A loss or change to sense of smell or taste.

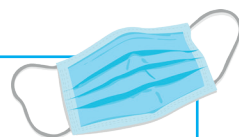
If your child has symptoms please contact the school immediately either via email general@thehambleschool.co.uk (for the attention of our School Matron – Mrs Brierley) or call the absence line on **023 8045 2105** (Option 1).

You will then need to get a test to check if your child has coronavirus as soon as possible. They must stay at home and not have any visitors until a negative test result is received. They must only leave your home to get a test. Once test results have been received, please update the school immediately using the absence line above.

When we have received information that your child will not be in school for longer than a day we will arrange work through the Pastoral Admin Support Team. The work will be collated in school and this will be emailed to you using the email address we have available for you on our school system. Please note that this process may take up to 48 working hours.

Please remember, that if any member of the household presents with COVID-19 symptoms, the whole household should self-isolate until a test has been taken and a negative result returned. Students should not be sent to school.

FACE COVERINGS



Face coverings are required if students are travelling to and from school using public transport. They also need to be worn on the station, if students are travelling by train.

Further information from South Western Railway is available here:

www.southwesternrailway.com/travelling-with-us/coronavirus-travel-information/back-to-school

CASHLESS CATERING

Please can we ask that where possible you check your child's cafeteria accounts online using Scopay and top up over the internet rather than send them into school with cash. This can be done by using this link

www.scopay.com/hamble

If you need any help logging in, please email general@thehambleschool.co.uk

SCHOOL UNIFORM

The majority of our students have returned in the correct school uniform and look very smart. They have also got used to wearing their PE kit on days when they have PE timetabled. Please can we remind parents/ carers that our uniform policy is available here www.thehambleschool.co.uk/uniform

A polite reminder that no jewellery other than a pair of stud earrings (one stud in one of each ear lobe) and a wrist watch or medical alert is allowed. No other piercings are permitted and students will be required to remove them if worn to school. We also do not allow retainers.

Socks need to be plain black, knee high or short socks without patterns or frills. Trainer socks are not allowed with school uniform and can only be worn on PE days.



PE EXTRA-CURRICULAR CLUBS

We are able to offer some sports clubs this term. Clubs for each year group will happen on one day of the week only – this is to avoid bubbles mixing.

All clubs are open to boys and girls. If there is a club not on their day, that they would like to do, we will rotate them at different points of the year. Generally the clubs have been arranged when students have PE in school time, so they should be in their kit.

However, there are a few situations where this has not been possible. In this case they are welcome to bring their PE kit to school and use the changing rooms after school.

AFTERSCHOOL (3:00 – 4:00pm)			
MONDAY			
TUESDAY – Year 7 ONLY	Netball (SKG)	Football (DNM and MTA)	Dance (JCS)
WEDNESDAY – Year 9 ONLY	Badminton (MTA)	Football	
THURSDAY – Year 8 ONLY	Netball (SKG)	Football (ABW / MTA)	
FRIDAY – Year 10 ONLY	Basketball (ABW)	Football (DNM)	

**All clubs are open to both boys and girls.
Students will meet by the PE Office at the start of each club and
will be allowed to change into their PE kit for a club if required.**

TOP REWARD POINTS

So many of our students have gained lots of reward points over the last two weeks. We have included the top five in each year group below – well done to everyone who is working hard and giving 100% to their studies:

YEAR 7	YEAR 8	YEAR 9	YEAR 10	YEAR 11
Lilly-Anne F (7-5)	Joshua R (8-8)	Ryan T (9-1)	Erin W (10-1)	Charley P (11-5)
Aurelia O (7-5)	Adam P (8-2)	Jensen P (9-9)	Charley L (10-1)	Katy B (11-5)
Archie S (7-2)	Charlie R (8-8)	Theo M (9-3)	Jack B (10-5)	Emilie M (11-7)
Nate M (7-2)	Finleigh K (8-2)	Andras S (9-6)	Alfie W (10-3)	Amelia S (11-6)
Poppy A (7-3)	Matthew L (8-7)	Mitchell P (9-2)	Kai M (10-1)	Isaac B-E (11-3)

If you need any further information about September 2020 we now have a dedicated webpage which will hopefully answer any questions you may have
www.thehambleschool.co.uk/september-2020