

THE HAMBLE SCHOOL

NEWSLETTER – ISSUE 5: 8TH DECEMBER 2020



It has been lovely to see all year groups back in school this week following the period of Remote Education. We were really impressed with how students engaged in their learning at home but it is great to be back together as a community in school.

During the last week of term we will be celebrating all the achievements this term in our celebration assemblies. Mr Govan will be writing to families before the end of term, but we do hope that despite the COVID-19 restrictions you manage to enjoy the Christmas preparations and we look forward to seeing all students back in school on Monday 4 January 2021.

DATES FOR YOUR DIARY

Friday 11 December 2020

Christmas Jumper Day

Friday 18 December 2020

Students will finish at 1pm

Monday 4 January 2021

All students return to school for Week 2.



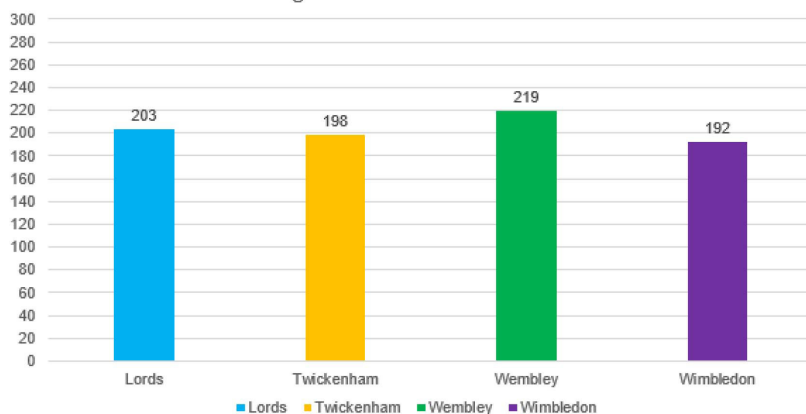
HOUSE POINTS – AUTUMN TERM

Well done to all our students for collecting so many House Points this term. The winning house for each year group in the autumn term is listed below.

- Year 7 – Lords • Year 8 – Wimbledon • Year 9 – Twickenham
- Year 10 – Lords • Year 11 – Wembley

Well done to Wembley who achieved the most house points per student overall. Remember that you can continue to achieve rewards in the spring term. Which house will win overall next year?

Average House Points Per Student

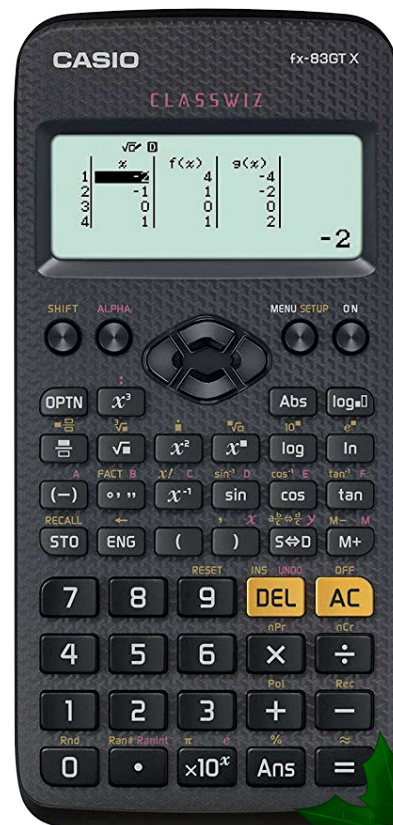


MATHEMATICS EQUIPMENT

Casio Classwiz Scientific Calculator

A reminder from Mr L Wood (Head of Maths) that students must have a scientific calculator with them every day. The maths department recommends the **Casio fx-83GTX**.

These can now be purchased online via Scopay for **£8.04**. Once payment is made, please ask your child to collect their calculator from the finance office.



TRANSITION – PHASE 3

This term we have hosted our Transition Phase 3 event. At The Hamble School we have always been proud of our extensive Transition programme. For us, the transition does not end in July and due to the extenuating circumstances of 2020 a smooth and successful transition was more important than ever.

At the start of term, we spoke to the students about the importance of gratitude and each student selected a member of staff from their junior school they would like to thank. Every Year 7 student wrote a postcard to a member of staff from their junior school to say thank you for the additional support they received. I know these postcards were gratefully received and the schools miss the students greatly.

In November 2020 we began our Phase 3 transition events. This gave the students the opportunity to see and speak to their Year 6 teachers. We met on Zoom during various lunch times and were able to connect with:

- Netley Abbey Junior School
- Hamble Primary School
- Bursledon
- St Patricks
- Botley CofE school
- Bannister Primary School
- Kanes Hill

It was a fantastic opportunity for the students to tell members of staff from their junior schools how well they are getting on, what they have enjoyed doing and about all of the new friends they have made. I know the staff from the junior schools were thrilled to see them and find out how well they are getting on.



Mrs Rickman: *It was lovely for our Year 6 staff to be able to meet virtually with some of the pupils who moved up to Year 7 in September and hear how they were getting on. The postcards were a great idea too – and very well received!*

Mrs Earle: *A huge thank you to the lovely Year 7's who joined us by Zoom and sent postcards to our staff. It was such a lovely surprise to receive these and we enjoyed being able to see so many happy, grown up faces! We miss you all but are so proud*

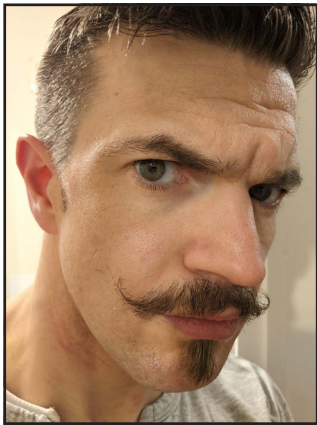
of how well you are doing at The Hamble School. Keep being the best you can be! From everyone at Netley Abbey Junior School ☺

Mr Murtagh: *After speaking with Mrs Sherman we thought that the postcards were deeply moving and it was so nice to hear how well all our students were doing in their next journey of education. The positive comments of life at Hamble Secondary School and the nostalgic moments they had in their last year at Bursledon made us all smile.*

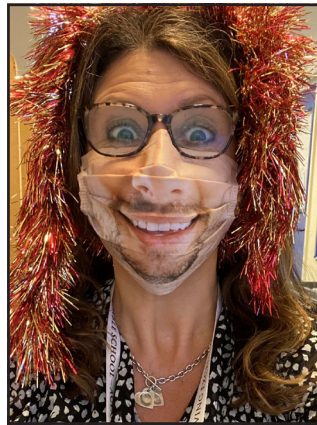


MOVEMBER®

Well done to Team Hamble and Mr P Knight for raising awareness of Men's Mental Health through Movember.



Mr Knight



Mrs Barton



Mr Smith



Ms Roome



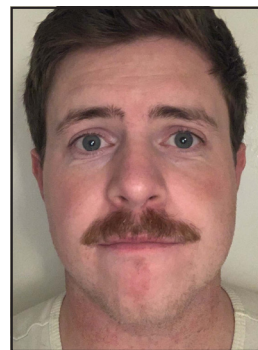
Mrs Green



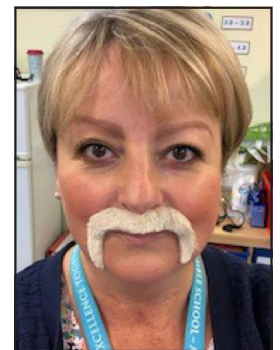
Mr Taylor



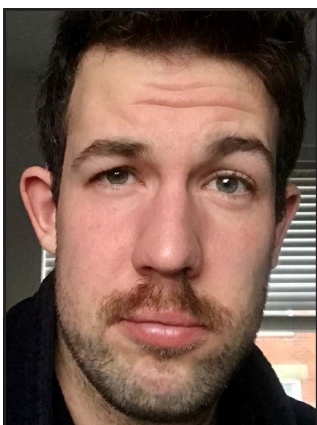
Miss Niblock



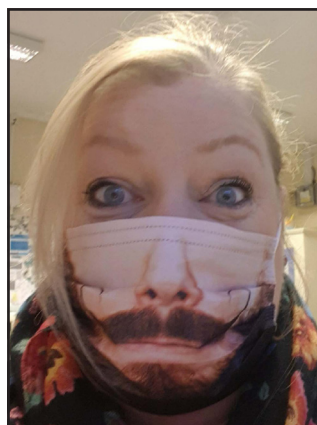
Mr Bradshaw



Mrs Threader



Mr Ford



Mrs Barkshire



Mrs Bridges



Mrs Bone

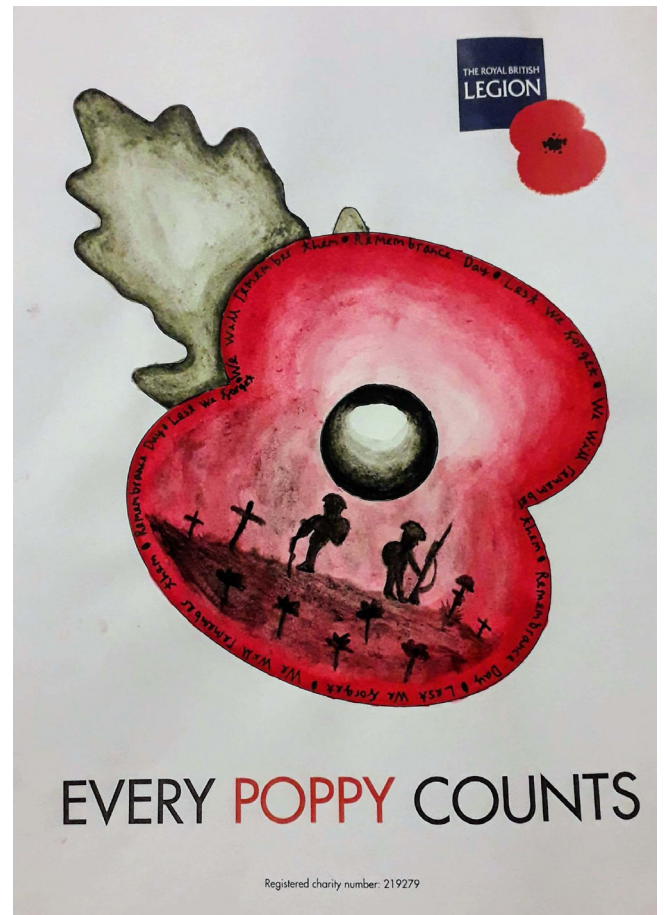
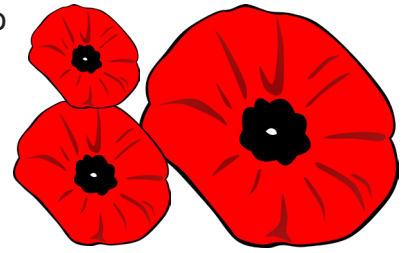
Thank you to all parents/ carers who have sponsored staff.

If you have not already had the chance to do so and would like to donate, please visit

<https://movember.com/t/team-hamble?mc=1>

REMEMBRANCE DAY 2020

This year our Remembrance Day events looked a bit different due to restrictions in school. However, we still commemorated with virtual assemblies and an art installation. We also asked each tutor group to create their own Poppy Display. Even in difficult circumstances we know that the community felt they could pay their respects in a meaningful way.



EASTLEIGH YOUTH CONFERENCE

Last month ten students were selected from Years 9 and 10 and invited to attend the 2020 Eastleigh Youth Conference, usually held at Barton Peveril College.

This year the workshops were all held virtually. The students 'attended' workshops with students from other schools on subjects such as mental health, online safety, substance abuse and relationships.

All students agreed it was fun and informative. They are now looking forward to being able to work with our students by running workshops and supporting the Welfare Prefects.

WELL DONE TO THE FOLLOWING STUDENTS

YEAR 9:

- Sonny Parker
- Tilly Gouch
- Hannah Bowers

- Sam Joliffe

- Paige Sutton

YEAR 10:

- Tom Hull
- Cody Wright
- Charlotte Smart
- Charlotte Goodchild
- Emily Cunnam



TOP REWARD POINTS

Congratulations to the following students who have achieved the most reward points this term:

YEAR 7

Aurelia O (7-5)
Pascale McC (7-5)
Eleanor M (7-2)
Elijah M (7-2)
Poppy A (7-3)

YEAR 8

Joshua R (8-8)
Christopher Q (8-6)
Lewis K (8-7)
Kye C (8-4)
Archie M (8-1)

YEAR 9

Caitlin D (9-2)
Lily M (9-6)
Tilly G (9-4)
Mitchell P (9-2)
Elysia W (9-7)

YEAR 10

Charley L (10-1)
Charlotte G (10-5)
Thomas H (10-6)
Erin W (10-1)
Rosie P (10-4)

YEAR 11

Emilie M (11-5)
Izzy T (11-5)
Alison H (11-5)
Isaac B-E (11-5)
Amelia S (11-2)

EXAMPLES OF FANTASTIC WORK

"ALL MEN ARE MADE EQUAL."

MARTIN LUTHER KING JR.

This quote was written by Martin Luther King Junior who was an equality rights activist in America in the early 1900's. He lived his life fighting for equality in America and was a strong Christian for the whole of his life. This quote is ★

The quote starts with the words 'All men'. This doesn't mean all black men and not white men. This doesn't mean all men but not women. This doesn't mean all teachers but not police officers. This means the whole of humanity. It also includes all of the people who are going to be born, and all the people who have been born into eternal life with God in heaven (the dead). It includes EVERYONE!


The quote includes the word 'Equal'. This word simply means 'the same'. So if you wanted to you could ~~read~~ change the quote to 'All men are made the same.'

The quote says 'Made Equal'. Which doesn't mean 'made equal' by each other, and how we see each other. And which doesn't mean made equal by the government, or the people in control of a country. It means made equal in God's eyes. Because God loves us each so much and in His eyes we are each so precious and amazing. He made us each specially with care and respect. But despite this God has no favourites or preferences because He loves us all equally. God doesn't say 'I love Jasmine more than Mr. Spencer', and He doesn't say 'I love teachers more than designers'. He says 'I love every one equally because I made you all with love and consideration'. He doesn't even love the goodest saints more than He loves you.

Martin Luther King wrote this quote to say that we were all made equally by God and should all be treated equally by each other.

★ What Martin Luther King believed and is how he lead his life.

Irrawaddy Dolphins (*Orcaella brevirostris*)



- Irrawaddy dolphins are considered endangered species, with only around 6000 estimated to still exist in the wild. (source: futureoceans)
- They inhabit a 118-mile stretch of river around Cambodia and Laos. (source: wwf)
- They are considered very important, because they are an important indicator of the health and sound management of the freshwater resources. Their decline may cause a devastating effect on the health of the entire ecosystem. (source: wwf)
- They use echolocation for communication at about 60 kHz.
- They feed on fish, cephalopods, and crustaceans. They sometimes spit water while feeding, which may be used to herd fish. (source: animaldiversity.org)
- They have no naturally identified predators, and only humans represent a threat to them. Irrawaddy dolphins are primarily threatened by bycatch, which is the accidental capture of aquatic animals in fishing gear. (source: wwf)

Kingdom	Animalia
Phylum	Chordata
Class	Mammalia
Order	Artiodactyla
Family	Delphinidae
Genus	Orcaella
Species	O. brevirostris

ADAPTATIONS:

The Irrawaddy dolphins look a lot like beluga whales, but they are in fact not closely related at all. The Irrawaddy dolphin lives in fresh and brackish water. They are slow and most fish are fast in the Irrawaddy dolphin's habitat so it is hard for it to catch fish (the highest speed an Irrawaddy dolphin has been recorded at is 25 KPH). The Irrawaddy is very cool because it has adapted to team up with fishermen. They work together well, because the dolphins force the fish into the fishing nets and feast on the overflow. While the Irrawaddy enjoys its meal, the fisherman receives a net full of fish to make their living. My theory on why the Irrawaddy dolphin has adapted this way is because it is too slow to catch enough prey to eat so this way it gets enough to eat and thus to reproduce. It is very rare that an animal adapts to a human because an adaptation normally takes longer to do than we have been on the earth.

They look very unique among dolphins. They are beakless, and do not have the typical streamlined head of dolphins; perhaps this is one of the reasons why they may be endangered, as they cannot swim quite so fast. However, they have long pectoral fins to make up for this and allow them to swim more easily, although the head shape is still an inconvenience. Irrawaddy dolphins have uniquely shaped bodies and a distinct lack of colouring, with dark grey on the topside and light grey underneath. They do not swim near the surface if they can help it, so this may be an adaptation to survive better in their underwater conditions.

